

SOUTHWORTH

OWNER'S MANUAL

PalletPal Stack-n-Go

Model FPS3000-43 NAS

For models that do not have GC or ST stamped into the mast



Model # _____

Serial # _____

Date placed in Service _____

SOUTHWORTH PRODUCTS CORP

P.O. Box 1380 • Portland, ME 04104-1380

Telephone: (207) 878-0700 or (800) 743-1000

Fax: (207) 797-4734

www.SouthworthProducts.com

Email: service@SouthworthProducts.com

September 2019

PalletPal Stack-N-Go

Please note:

This manual was current at the time of printing.
To obtain the latest, most updated version, please contact
Southworth's Customer Service Department or go to our website:
www.SouthworthProducts.com, under Parts & Service
you will find a complete list of current
owner's manuals to print.

TABLE OF CONTENTS

INTRODUCTION	5
RESPONSIBILITY OF OWNERS AND USERS	6
Safety Alert Symbols and Signal Words	7
SAFETY PRECAUTIONS	8
INSTALLATION INSTRUCTIONS	10
Inspection	10
Removal from Pallet	10
Preparation for Use	10
Battery	10
Set Up Procedure for PalletPal Stack-n-Go Straddle Legs	11
OPERATOR INSTRUCTIONS	12
Suggested Daily Operator Checklist.....	14
BATTERY MAINTENANCE & CHARGING	15
MAINTENANCE	16
TROUBLESHOOTING	17
STACKER BODY COMPONENTS.....	18
CABINET ASSEMBLY	19
CARRIAGE ASSEMBLY	20
OUTRIGGER LEG ASSEMBLY.....	21
INNER MAST ASSEMBLY.....	22
STEERING ASSEMBLY	23
CONTROL POD	24
DRIVE WHEEL ASSEMBLY	25
POWER UNIT ASSEMBLY	26
CYLINDER ASSEMBLY	27
ELECTRICAL DIAGRAM.....	28
BATTERY CONNECTION DIAGRAM	29
LABEL LOCATION DRAWING	30
ORDERING REPLACEMENT PARTS	31
WARRANTY STATEMENT	32

PalletPal Stack-N-Go

INTRODUCTION

This manual attempts to provide all of the information necessary for the safe and proper installation, operation and maintenance of the Southworth Products battery operated, PalletPal Stack-n-Go. It is important that all personnel involved with the installation, maintenance or operator of the stacker read this manual. Additional manuals are available upon request or at www.SouthworthProducts.com.

Each Southworth stacker is equipped with nameplate, serial number and model identifications. Please refer to these numbers when ordering parts or requesting further information.

This Southworth stacker is designed for lifting, lowering and positioning a wide variety of loads. WHERE UNIQUE SITUATIONS ARISE, WHICH ARE NOT COVERED IN THIS MANUAL, CALL SOUTHWORTH PRODUCTS FOR FURTHER INSTRUCTIONS.

The battery operated stackers are designed for dry in-plant/non-hazardous locations only. They can be used in a 8' or larger aisle. These units are not for personnel lifting.

Responsibility of Owners and Users

Inspection and Maintenance

The device shall be inspected and maintained in proper working order in accordance with Southworth's owner's manual.

Removal from Service

Any device not in safe operating condition such as, but not limited to, excessive leakage, missing rollers, pins, or fasteners, any bent or cracked structural members, cut or frayed electric or hydraulic lines, damaged or malfunctioning controls or safety devices, etc. shall be removed from service until it is repaired to the original manufacturer's standards.

Repairs

All repairs shall be made by qualified personnel in conformance with Southworth's instructions.

Before Operation

Before using the device, the operator shall have:

- Read and/or had explained, and understood, the manufacturer's operating instructions and safety rules.
- Inspected the device for proper operation and condition. Any suspect item shall be carefully examined and a determination made by a qualified person as to whether it constitutes a hazard. All items not in conformance with Southworth's specification shall be corrected before further use of the equipment.

During Operation

The device shall only be used in accordance with this owner's manual.

- Do not overload.
- Ensure that all safety devices are operational and in place.

Modifications or Alterations

Modifications or alterations to any Southworth industrial positioning equipment shall be made only with written permission from Southworth.

CERTIFIED OPERATOR TRAINING

You must be trained and certified to operate this powered stacker. Federal law states that only properly trained operators are permitted to operate a powered industrial stacker and that your employer must train you and certify that you are qualified. (OSHA 1910.178 29QFR-7-1-06 Edition)

Southworth does not offer operator training. Operator training programs may be offered by your local Southworth dealer or obtained online. Enter, "powered industrial truck operator training" into a search engine.

SAFETY ALERT SYMBOLS AND SIGNAL WORDS

The safety of all persons operating, maintaining, repairing, or in the vicinity of this equipment is of paramount concern. This is a powerful machine with moving parts, and is capable of causing personal injury if proper precautions are not taken. Therefore, throughout this manual, certain hazards have been identified which may occur in the use of the machine, and there are appropriate instructions or precautions which should be taken to avoid these hazards. In some cases, there are consequences which may occur if instructions or precautions are not followed. Below are the symbols and signal words along with their definitions referenced from ANSI Z535.4 - Product Safety Signs and Labels.

Safety Alert Symbols

These are the safety alert symbols.. They are used to alert you to potential physical injury hazards. Obey all safety messages that follow this symbol to avoid possible injury or death.



For use with **DANGER** signal word
(Red Background)



For use with **WARNING** signal word
(Orange Background)



For use with **CAUTION** signal word
(Yellow Background)

Signal Words

The meaning of different signal words as defined by ANSI Standard Z535.4 indicates the relative seriousness of the hazardous situation.



(Red Background)

DANGER indicates a hazardous situation which, if not avoided, will result in death or serious injury.



(Orange Background)

WARNING indicates a hazardous situation which, if not avoided, could result in death or serious injury.



(Yellow Background)

CAUTION, used with the safety alert symbol, indicates a hazardous situation which, if not avoided, could result in minor or moderate injury.



(Blue Background)

NOTICE is used to address practices not related to personal injury.



(Green Background)

SAFETY INSTRUCTIONS (or equivalent) signs indicate safety-related instructions or procedures.

PalletPal Stack-N-Go

The battery operated stackers are very powerful lifts capable of doing large amounts of work.

DO NOT OPERATE THESE LIFTS WITHOUT CAREFULLY READING THIS MANUAL. In order to provide for the safe operation of these stackers, Southworth has identified certain hazards that may occur during the maintenance and use of these lifts. For safety reasons these units are designed to be serviced or repaired in the fully lowered position. If performed properly, this will greatly reduce the possibility of injury.

WARNING

When servicing the unit:

1. Key should be in "OFF" position.
2. E-stop should be depressed.
3. Disconnect the batteries at the terminals.
 - Do not perform any repair work on lifts if there is a load on the forks or platform.
 - Do not perform any repair work if the forks or platform is in the raised position.
 - All personnel must stand clear of the lift while in motion.
 - Do not put hands or feet under the forks or platform.
 - Do not stand underneath the forks or platform.
 - Do not stand in front of the stacker while in motion.
 - Do not stand, sit or climb on the lift.
 - Do not use the lift on soft, uneven or unstable surfaces.
 - Do not exceed the load center or capacity.

WARNING

You or others around you can be seriously injured or even killed if you don't use this stacker correctly. Read and obey all warnings and instructions in this manual and on the stacker. It is your responsibility before starting work to make sure it is in good working order.

Always be alert to the area around you and watch where you are walking. Be careful that you don't get pinned or crushed between the stacker and a fixed object such as a wall or post.

- Watch your hands and feet. A foot or hand caught between the stacker and a fixed object will be crushed or even cut off.

- If traveling forks first, keep both hands on the control handle and be careful when changing direction of travel. Keep your feet clear of the stacker.
- Keep the stacker under control at all times. Operate at a speed that allows you to stop safely. Be even more careful on slippery or uneven surfaces. Do not run over objects on the floor.
- Perform all stacker movements smoothly and at a speed that will give you time to react if an emergency occurs.

Tipovers and falls are very serious accidents; you can be crushed or even killed. To prevent injury, know where you are at all times and follow the rules of safe stacker operation.

- Be careful when working around docks, dockboards and trailers. Stay away from the edge of docks and ramps. Check to make sure the wheels of truck or trailers are chocked.
- Travel with the load or forks close to the ground. Watch for overhead obstructions. Perform all stacker movements smoothly and at a speed that will give you time to react in an emergency.
- Keep your hands and feet away from all moving parts such as masts, chains, forks or wheels.
- Never stand on or under the forks, or allow anyone else to stand on or under them. Never ride on the stacker or allow anyone else to ride. There is no safe place to sit or stand.
- Before you leave your stacker, be sure to lower the forks to the floor. Shut the stacker off with the key.

WARNING

- DO NOT** use this stacker until you have been trained and authorized to do so.
- DO NOT** operate until you have read all warnings and instructions.
- DO NOT** exceed load center or load weight capacities (check capacity plate).
- DO NOT** operate until you have checked the conditions of the stacker: lift systems, forks, chains, and cables.
- DO NOT** use if any part is damaged, worn or not working properly.
- DO NOT** use on ramps or inclines. Only smooth level surfaces.
- DO NOT** use for lifting or carrying people.
- DO NOT** handle unbalanced, unstable or loosely stacked loads.
- DO NOT** travel with forks or platform in an elevated position.
- DO NOT** handle tall, unsecured or unstable loads that could fall.
- DO NOT** allow people to stand or pass under forks or platform with or without load.
- DO NOT** operate when parts of anyone's body may be close to mast structure or any moving parts.
- DO NOT** drop loads on platform or forks.
- DO NOT** alter or modify this stacker in any way.

INSTALLATION

A. INSPECTION:

Upon receipt of the stacker, inspect the equipment completely to determine if there is any shipping damage, and that the lift is complete. Southworth tests and inspects every piece of equipment prior to shipment. If damage is apparent, a freight claim must be filed with the freight company. Do not use the stacker if there appears to be any damage. With the stacker in a lowered position, check the following:

- Check for signs of damage especially to the back cabinet that houses the battery, electrical/hydraulic power pack.
- Check all electrical and hydraulic connections for tightness.
- Remove back panel.
 1. Turn key switch to "OFF" position.
 2. Push in E-stop and unscrew the red knob,
 3. Lift off back panel. There is enough wire to the key switch to allow the panel to be set aside.
- Inspect for any bent or damaged parts.

B. REMOVING FROM PALLET

Each of the Southworth stackers is shipped out on a pallet or skid. Prior to removing the unit from the pallet or skid, remove all tie down straps and packaging. Visually inspect the unit as closely as possible.

With an overhead hoist or forklift, carefully pick up the unit taking into consideration the center of gravity of the unit. If you choose to pick the unit with an overhead hoist, use a nylon sling and hoist with a minimum of 2,000-lb. capacity. The nylon sling will not do any damage to the steel construction of stacker. Pick the unit up. On conventional masts use the top crossmember of the lift. On narrow masts the cover must be removed to access lifting equipment. Be careful of the stacker swinging once fully lifted off the pallet or skid. Have all personnel completely cleared from the area.

Pick the unit up approximately six inches above the pallet or skid. Once raised, remove the pallet or skid from below the lift. Do not move the lift around in the air. Lower the stacker on the ground.

C. PREPARATION FOR USE

This stacker left our factory in new condition. It has been inspected and weight tested to assure all performance standards have been met.

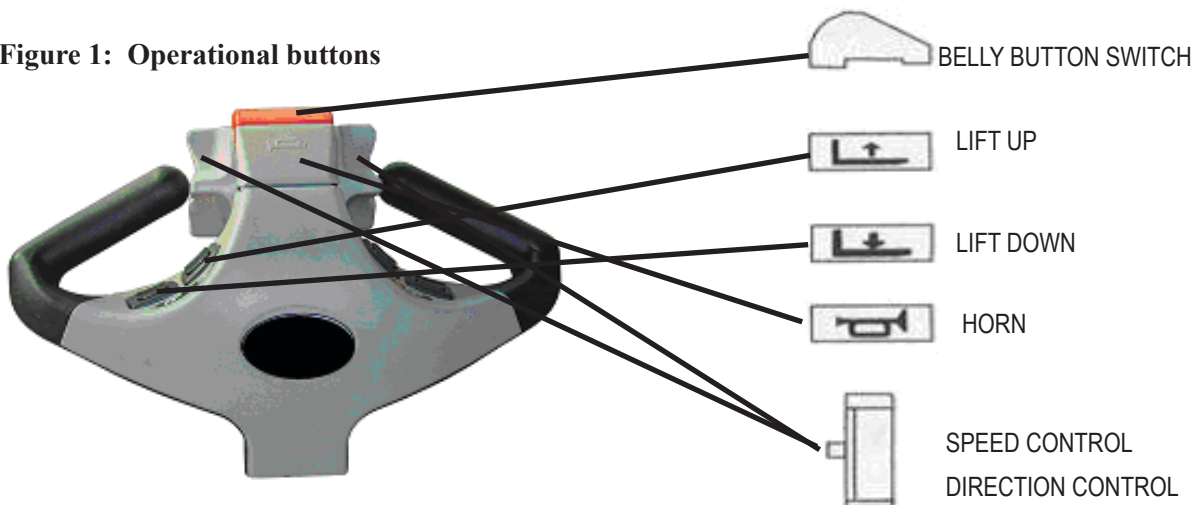
Visually inspect the stacker for damage. Check for attachments and accessories that may have been ordered. If there is any damage or missing parts, report it to your carrier and your Southworth dealer immediately.

Remove all metal/plastic bands, cardboard and other material used for shipping purposes.

Check to see if chains are in place, and that the lift system is in working order. Inspect for oil leaks.

Connect battery cable. Check cables and wires on battery charger as well as battery.

Figure 1: Operational buttons



CRITICAL PROCEDURE FOR PROPER WHEEL TRACTION

Proper Drive Wheel traction is obtained for the Stack N Go Straddle unit using this Procedure

All Stack N Go Models are designed and intended to operate on an unfinished concrete floor surface. If any Stack N Go is operated on smooth or polished concrete, sealed concrete, epoxy sealed floor, linoleum or other smooth surfaces Drive Wheel traction performance may be affected; If traction issues are encountered Rubber Drive Wheels are available through special order. **Please contact Customer Service.**

When any Stack N Go is operated on a wet, oily, powdery, sandy or non-uniform liquid or granular surface Drive Wheel traction performance **will** be affected and loss of traction will occur.

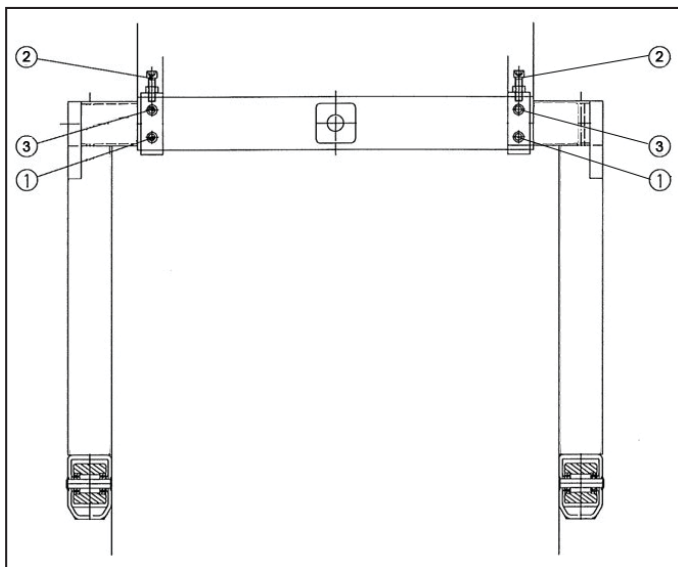
SET-UP PROCEDURE FOR STACK N GO STRADDLE LEGS

NOTE: STRADDLE LEGS MUST BE ADJUSTED IN ACCORDANCE WITH THIS PROCEDURE

1. Stack N Go unit located on flat, clean uniform surface, unloaded, forks raised a minimum of 1" off the floor
2. Determine the desired/required straddle width dimension (2 inches greater than pallet width, 1" on each side of the pallet or load, up to a maximum of 50 inches inside width)
3. Be sure to fully loosen all bolts before moving stabilizing legs. Adjust one stabilizer leg at a time – using a pry bar, pinch bar, rubber mallet etc. move the straddle leg out from the base tube to the desired position. Do not move too far, see picture below, if the ¼" wide painted White Line is visible the leg is pulled out too far; Maximum movement 5 ½" for each leg for 2200 pound units, 4 ½" for each leg for 3000 pound units.
4. Adjust second Straddle Leg – using a pry bar, pinch bar, rubber mallet etc. move the straddle leg out from inside the base tube to the desired straddle width position.
5. **Straddle Legs must be symmetrically adjusted, both legs adjusted to the same extended dimension!**

CRITICAL – STRADDLE BOLT TIGHTENING SEQUENCE & PROCEDURE

Set up procedure for Stack N Go Straddle legs with 3 or 4 Bolts:



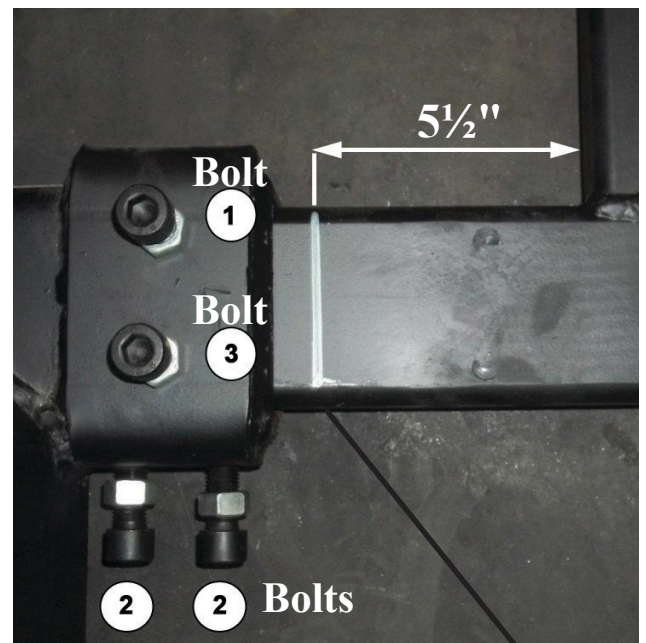
Back off all bolts and follow steps.

First - tighten Bolt 1 to **85 foot pounds**.

Second - tighten Bolt(s) 2 to **85 foot pounds**.

Third - tighten Bolt 3 to **25 foot pounds** - **NOT 85**.

Last - securely tighten all lock nuts.



NOTE: —————
When adjusted correctly, white line cannot be seen.

OPERATION

A. OPERATING INSTRUCTIONS:

AUTHORIZED OPERATORS SHOULD READ AND UNDERSTAND ALL INSTRUCTIONS, PRECAUTIONS AND WARNINGS. IMPROPER USE OF THIS LIFT TRUCK COULD RESULT IN INJURY AND/OR DAMAGE TO LOAD AND EQUIPMENT.

To Raise and Lower:

There are two buttons located on both sides of the handle. The inside one is for raising the forks. The outside one is for lowering the forks. When operating, always make sure the load being lifted is within the loading capacity of your stacker and the load has been stacked safely on the pallet. Also, make sure that the length of the forks corresponds to the length of the pallet. In this way, the load rollers will place themselves in the opening at the end of the pallet, so that when you raise the forks, you will not break the bottom boards of the pallet. Always make sure that when entering the pallet that the forks are in the fully lowered position. Be careful when lifting pallets that are too short or too long for the stacker. It might destroy your pallet by breaking the bottom boards, and if the forks project through the end of the pallet, the tips of fork may go into the next pallet that is behind the pallet that you are lifting, which may bend the tips of forks and overload the capacity of the stacker.

Travel Function:

To travel, rotate the butterfly controls throttle on the upper part of the handle. When rotating the butterfly control CW towards the forks, the stacker runs forwards in the forks first direction. When rotating the butterfly CCW towards you, the stacker runs backwards in the handle first direction. Always make sure the stacker clears any obstruction when traveling, and that your path of travel is clear of people. Never carry loads above the loading capacity of the stacker. It is suggested that when traveling without a load, the forks be in the lowered position. The speed of the stacker is increased by the degree of the rotation in either direction; it functions like a throttle. When you release your hand from the butterfly control, it automatically will resume to the neutral position and the speed of the stacker will slow down.

Electric Brake:

Your stacker is equipped with an electric magnetic brake. The brake is applied when the handle is in its vertical position between 10 – 15 degrees and lowered position between 80 – 90 degrees. The brake could be released when you pull down the handle at any point between 15 – 80 degrees. Always make sure the brake is released before operating the stacker. When the stacker is running, you could brake the stacker by raising the handle to its vertical position or lowering the handle to its lowest position. Or, to turn the butterfly controls in the opposite direction, the change in direction of the motor will slow down, stop, and reverse the direction of stacker. **When parked**, always put the handle in the full vertical position with the brake applied and the forks in lowered position.

Reversing Safety:

At the end of the handle there is a large, red reversing bar (belly button switch) that is designed to protect the operator from injury. When the operator runs the stacker backwards, and the end of the handle comes in contact with the operator's body, the stacker will automatically reverse direction and travel away from the operator. When the reversing safety bar comes in contact with your body during operation, immediately release your hands from the butterfly control and put the handle up to its vertical position or down to its lowest position and the brake is on. The reversing safety bar will automatically resume to its original position after being activated.

Horn:

As standard equipment, a horn that is located on the top of the handle.

- Inspect the lift for damaged or worn parts. *Do not* use if not in safe operating condition.
- Use lift on hard level surfaces only.
- Make sure load is evenly distributed, not loose or unstable, and is as far back on platform or forks as possible. *Do not* pick up loads on tips or forks or edge of platform.
- For fork models, adjust forks to the maximum practical width. Pick up loads on both forks.
- *Do not* overload. Check load center and load weight capacities on the nameplate.
- Make sure travel and work area is clear of obstructions.
- Check overhead clearance before lifting loads or transporting.

B. DAILY OPERATIONS MAINTENANCE CHECKS:

- 1. Battery**
 - A. Check for corroded and loose terminals.
A white powder substance will be present if there is any existing corrosion.
 - B. Visually inspect for any cracks or damage to the casing.
 - C. Check for loose battery tie-downs.
- 2. Charger**
 - A. Inspect wire connections.
 - B. Check power cord for nicks/damage.
 - C. Check power charger for proper mounting.
- 3. Hydraulic System**
 - D. Inspect pump and cylinder for oil leaks.
 - E. Check hydraulic oil level.
 - F. Check hydraulic fittings and hoses.
 - G. Check ram for nicks/damage.
- 4. Frame Assembly**
 - A. Check chain roller assembly connections.
 - B. Check for any worn or damaged parts.

DAILY OPERATOR CHECK LIST

CHARGE CONDITION/BATTERY CHECK LIST

1. Check Battery Discharge Indicator (Fuel Gage and Hour Meter) – Be sure unit is showing **proper Charge Level** before operating unit
2. Check to be sure **Charging Cord** is **Unplugged** and properly stowed before operating unit
3. Inspect Battery Wire Connections – All connections should be tight with **No Corrosion** (white powder) showing at the **Battery Terminals**
4. Inspect Battery Case – There should be **no cracks or visible damage** to the **Battery Case**

WALK AROUND INSPECTION

1. Check general condition of Stacker (loose or broken parts, oil, dangling wires, dents, cracked covers etc.)
2. Check metal frame, mast, carriage and front load supports for cracked welds, worn or flat rollers, loose or disconnected chains, loose pins, missing snap rings, and loose or missing hardware – bolts, nuts washers etc.
3. Check for evidence of hydraulic leaks
4. Make sure all precautionary labeling is in place and legible

FUNCTIONAL INSPECTION

1. Check Drive – Forward and Reverse Function
2. Check Lift – Up and Down Function
3. Check Function for Belly Button Reverse
4. Check Horn Function
5. Check Brake Function

OPERATOR ID _____ DATE _____

DO NOT USE OR OPERATE STACKER IF ANY FUNCTION IS NOT OPERATING PROPERLY OR IF STACKER APPEARS UNSAFE IN ANYWAY

REPORT CONCERNS TO SUPERVISOR IMMEDIATELY!

BATTERY MAINTENANCE

A. PREPARING TO CHARGE A BATTERY

1. Always turn off E-stop and key switch before working with the batteries.
2. Be sure the area around the stacker and the battery is well ventilated while battery is being charged.
3. The battery terminals, connections and wiring connections should be clean and free of corrosion. When cleaning any of these components wear a face shield or other suitable protective eyewear.

B. BATTERY CHARGING

Charging must be performed with the charger that is provided with or prewired into the machine. During charging, the temperature in the battery must not exceed 120 F. Charging simultaneously with truck operation is not recommended. Plug the charger into a 115 volt outlet. Charge until the battery gauge indicator lights show fully charged (approximately 6-8 hours).

C. WARNINGS AND BATTERY INFORMATION

Avoid use of open flame near batteries. At temperatures around freezing point, battery capacity is reduced by 30%. The battery terminals, connections and wiring should be clean and free of corrosion. When cleaning any of these components, wear a face shield or other suitable protective eyewear. Read, understand, and follow all battery and battery manufacturer's specific precautions while working with and/or charging batteries.

D. BATTERY MAINTENANCE

NOTICE

When to charge the battery?

Allow the machine to stand idle for at least one hour. Check the Battery Discharge Indicator. If 6 bars or less are lit, it is time to charge the battery.

See owner's manual for charging instructions.

To measure the voltage, use a digital voltmeter (DC) on the battery poles. The truck must not have been in use for the previous 30 minutes.

⚠ DANGER

Never alter the AC cord or plug provided. If it will not fit outlet, have proper outlet installed by a qualified electrician. Improper connection can result in a risk of an electric shock.

1. Disconnect the charger from the 115 volt wall outlet once the indicators read fully charged.

Note: The batteries are designed for intermittent use. Continual usage will wear the battery out and charging will be required.

E. CHARGER OPERATION

Power Lamp


1. Green: Connection correct. Charger will operate normally.
2. Red: Bad connection or bad battery.

Fault

1. Red light blinks 3 times in 5 seconds: The output between charger is faulty, loose, or bad connection
2. Red light blinks 5 times in 5 seconds: The temperature is too hot for the charger to operate.
3. Building power is not compatible; too low or too high. +/- 10% is the general rule.

Charge Lamp

1. Red: Charger can charge normally. The battery is less than 70%
2. Orange: Battery is between 70% and 100% charged.
3. Green: Battery is at 100%. Fully charged.
4. No light: The charger can not charge the battery. Voltage of the battery may be too low to cause the charger to start. It must be at 10.5 volts to initiate charge.



VOLTAGE	
Approx. 12.7 V	Fully charged
Approx. 12.2 V	1/2 charged
Approx. 12.0 V	1/4 charged
Approx. 11.6 V	Discharged

MAINTENANCE

Operation of Southworth Stack N Go is very simple — as is their construction. They require very little maintenance. Reasonable care will result in excellent trouble-free performance. The Stack N Go is designed for one-man operation and ease of performance.

- Grease floor wheels and casters at least once a month
- Use only Hydraulic Oil AW32 or Dextron III in the hydraulic system.
- *Do not* overload your lift.
- Check brakes, steering mechanisms and controls before each use.

A. WEEKLY OPERATIONS MAINTENANCE CHECKS:

DAMAGE: Check for bent, dented, worn or broken parts.

LIFT SYSTEM: Check to assure that there is no binding or excessive play in the forks. Check for quiet and smooth operation of the lift cylinder. Check all moving parts and linkage.

LEAKS: Check hydraulic system for leaks and hydraulic oil level.

WHEELS AND CASTERS: Check for wear and that they are turning smoothly.

LIFT CHAINS: Check to see that they are in place and not loose.

FORKS: Check that they are not bent or cracked.

BRAKES: Ensure brakes work properly.

CABLES; WIRES: Check that there are no loose cables or wires.

LABELS: Ensure all precautionary labels and guards are in place.

B. MONTHLY OPERATIONS MAINTENANCE CHECKS:

1. Battery (maintenance free)

- A. Clean terminals.
- B. Clean battery compartment area if there are signs of corrosion.

2. Hydraulic System

- A. Clean and inspect hydraulic cylinder.
- B. Lubricate chain with a rust inhibitive lubricant (light machine oil).
- C. Check chain tension. It should be even on both chains. The chain should be tight enough so that it does not come off of the roller assembly.

3. Frame Assembly

- A. Clean and lubricate all roller bearings, cam followers and all moving parts.
- B. Clean and inspect all welds.
- C. Check wheels for wear and damage.
- D. Inspect nameplate for legibility. Place the serial and model number shown on the nameplate on the cover of the manual for future reference.

4. Electrical

- A. Check batteries, motors, controllers, limit switches, electrical conductors and connections.

CAUTION:
**DO NOT USE LIFT IF IT IS NOT
OPERATING PROPERLY,
OR APPEARS UNSAFE IN ANY WAY!**

TROUBLESHOOTING

Before starting the troubleshooting, you have to:

- A. Put the truck on an even and solid surface.
- B. Turn off key switch or disconnect the battery terminals.

1. Unit will not lift (motor does not run)

- Faulty wiring from fuse to lift switch in handle
- Faulty lift switch
- Faulty wiring from battery positive terminal to pump contactor to pump motor
- Burned out brushes in pump motor
- Low hydraulic pressure caused by:
 - Pressure relief valve needs adjustment
 - Pump check valve stuck open
 - Faulty solenoid valve
- Faulty wiring from lift switch to solenoid
- Faulty lift contactor
- Defective control circuit fuse
- Chain or roller bound
- Check oil level

2. Forks will not lower

- Look for binding in chains or rollers

3. No electrical power

Dead Batteries:

- Keyswitch on "OFF" position
- E-stop button depressed
- Loose or dirty battery connections
- Blown fuse(s)
- Faulty wiring from fuse to travel control switch
- Faulty control switch
- Faulty wiring from travel control switch direction contactor
- Faulty contactor

4. No Traction

- Idler wheel needs adjustment

IDLER WHEEL ADJUSTMENT

The following is a procedure for adjusting the idler wheel on the Southworth Stack N Go. Under normal conditions this should not be necessary because the idler wheel has been adjusted at the factory.

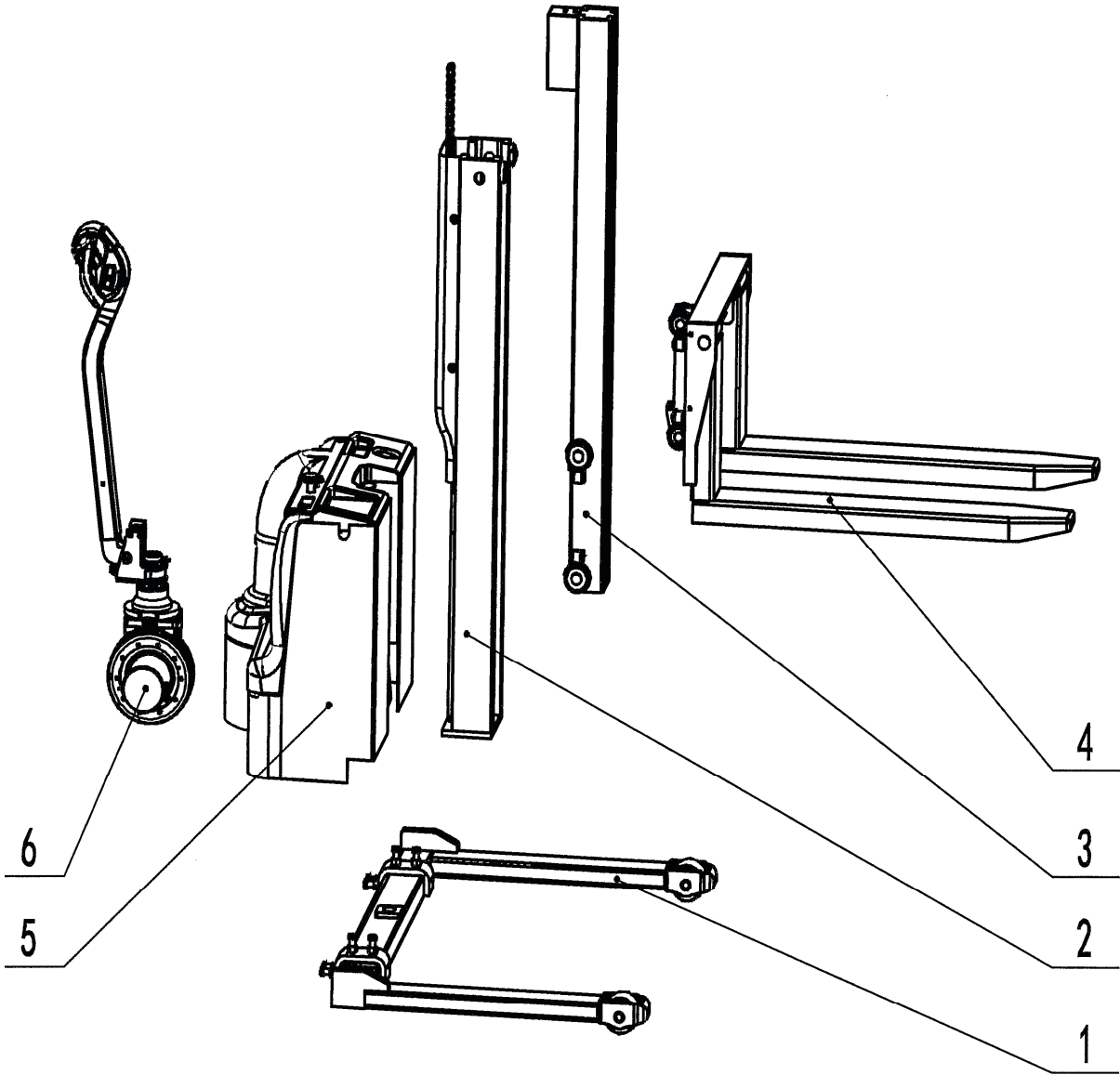
Tools Needed:

- Phillips head screw driver
- Medium crescent wrench
- 1 block of wood (2 x 4)

1. Place unit on a flat surface.
2. Turn key to the OFF position and push emergency stop button down.
3. Remove the 2 screws from the main orange cover that covers the unit.
4. Remove the emergency stop button by unscrewing.
5. Slide the main cover up and place the block of wood under the right hand side to hold open exposing the idler wheel and adjusting the screw.
6. With the adjustable wrench loosen the jam nut on the idler wheel adjusting screw.
7. Loosen the adjusting screw until you have no tension between the adjusting screw and idler wheel. You will have some play between the idler wheel and the left front wheel.
8. Now tighten the screw until you just make contact with the idler wheel. Continue adjusting until the idler wheel just touches the floor.
9. Tighten jam nut. You may have a slight rocking back and forth, from the left front to right rear idler wheel, but this is not uncommon.
10. Now remove the wooden block and lower the cover back into place inserting the 2 screws and tighten. Screw the E-stop button back on.
11. Your adjustment is complete

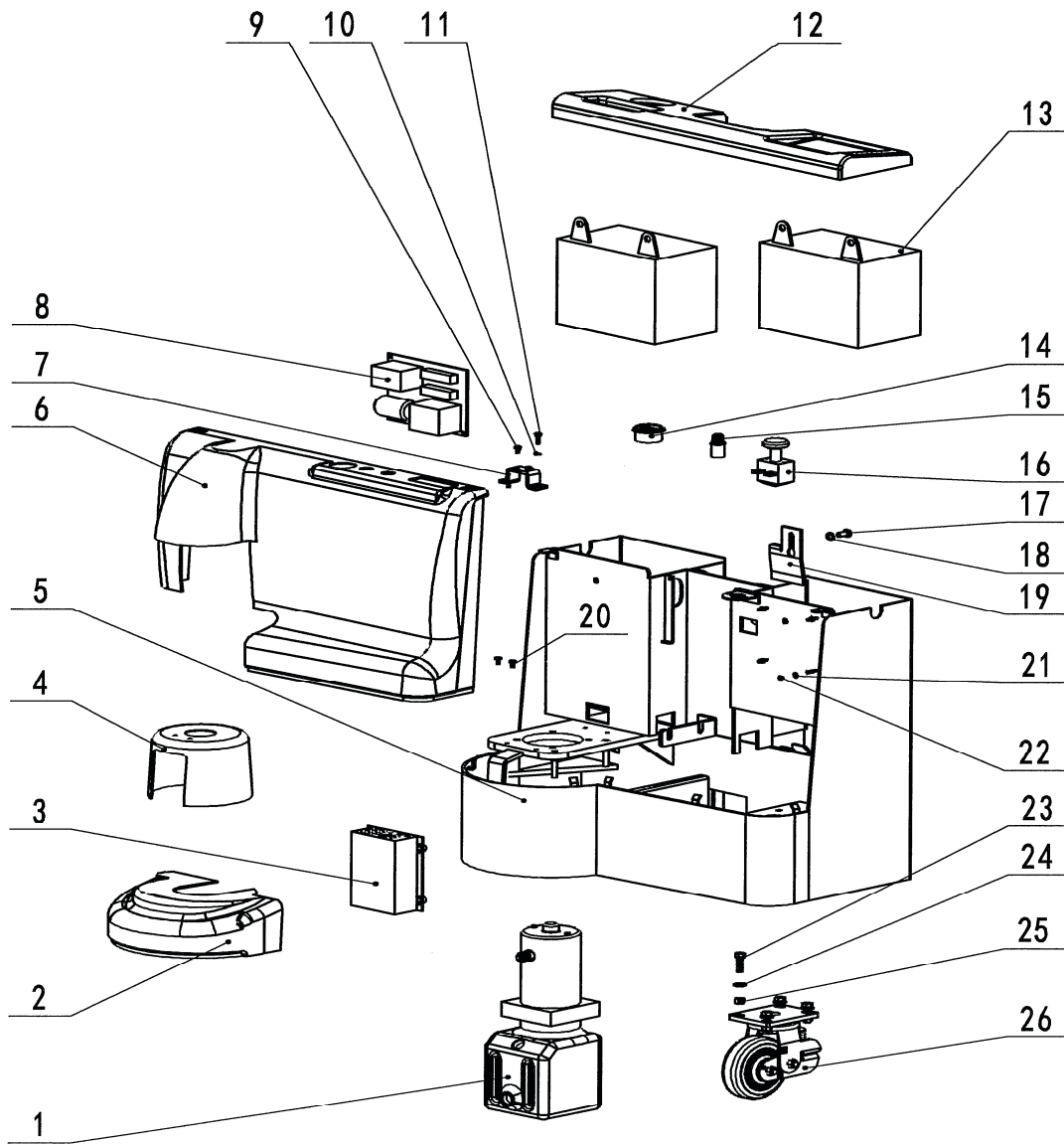
If the wheel is worn, replace wheel.

STACKER BODY COMPONENTS



Item	Description	Qty
1	Leg Assy	1
2	Outer Mast Assy	1
3	Inner Mast Assy	1
4	Lift Frame Assy	1
5	Rear Box Assy	1
6	Steering Assy	1

CABINET ASSEMBLY



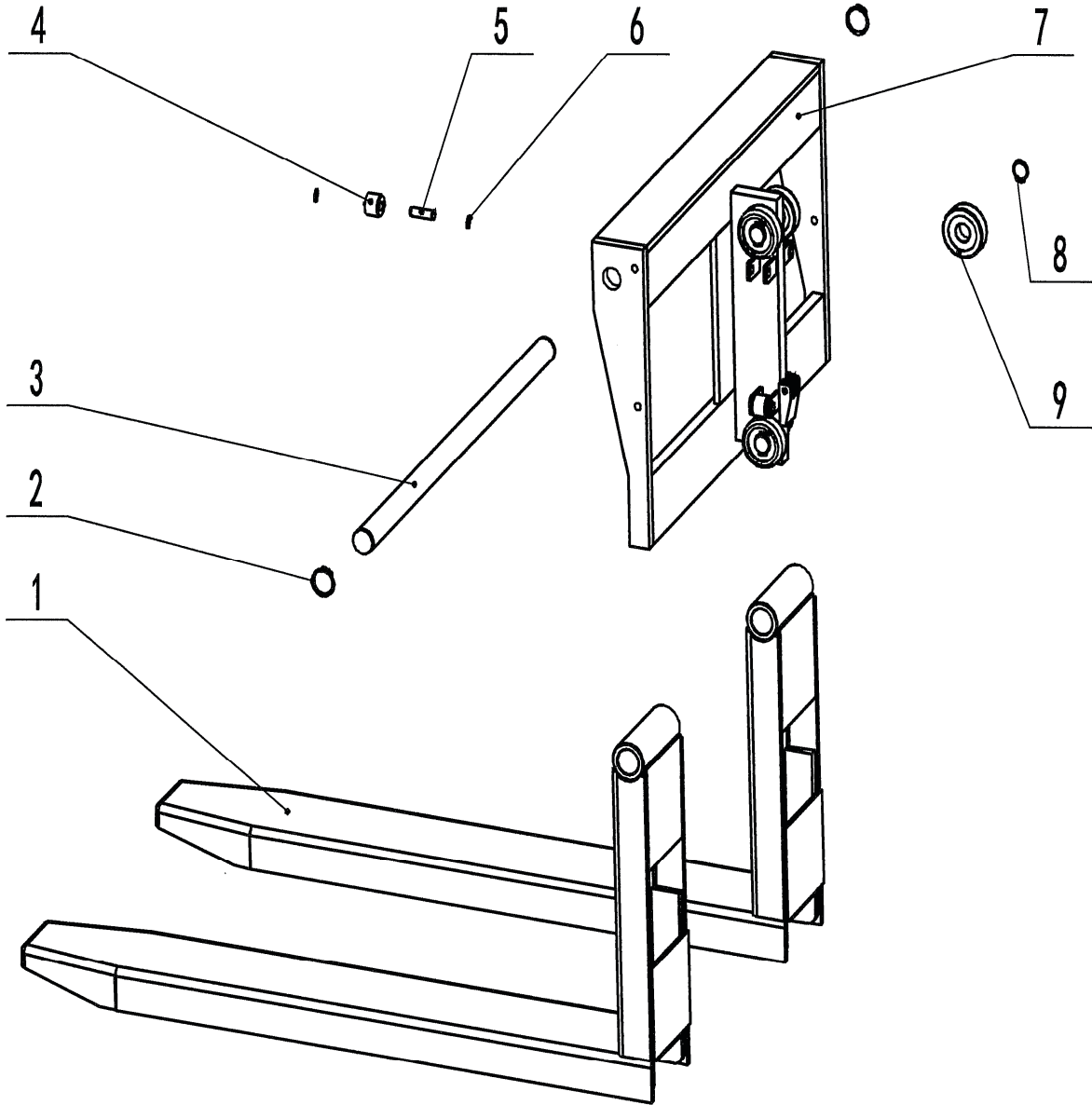
Item	Description	Qty
1	Power Unit	1
2	Drive Cover	1
3	Battery Charger	1
4	Steering Cover	1
5	Body Weldment	1
6	Rear Box Cover	1
7	Cover Holder	1
8	Electrical Component	1
9	Screw	6
10	Washer	2
11	Bolt	2

Item	Description	Qty
12	Battery Box Cover	1
13	Battery	2
14	Battery Meter	1
15	Key Switch	1
16	E-Stop Switch	1
17	Bolt	2
18	Washer	2
19	Battery Holder	2
20	Bolt	2
21	Washer	4
22	Nut	4

Item	Description	Qty
23	Bolt	4
24	Washer	4
25	Nut	4
26	Caster Wheel	1

PalletPal Stack-N-Go

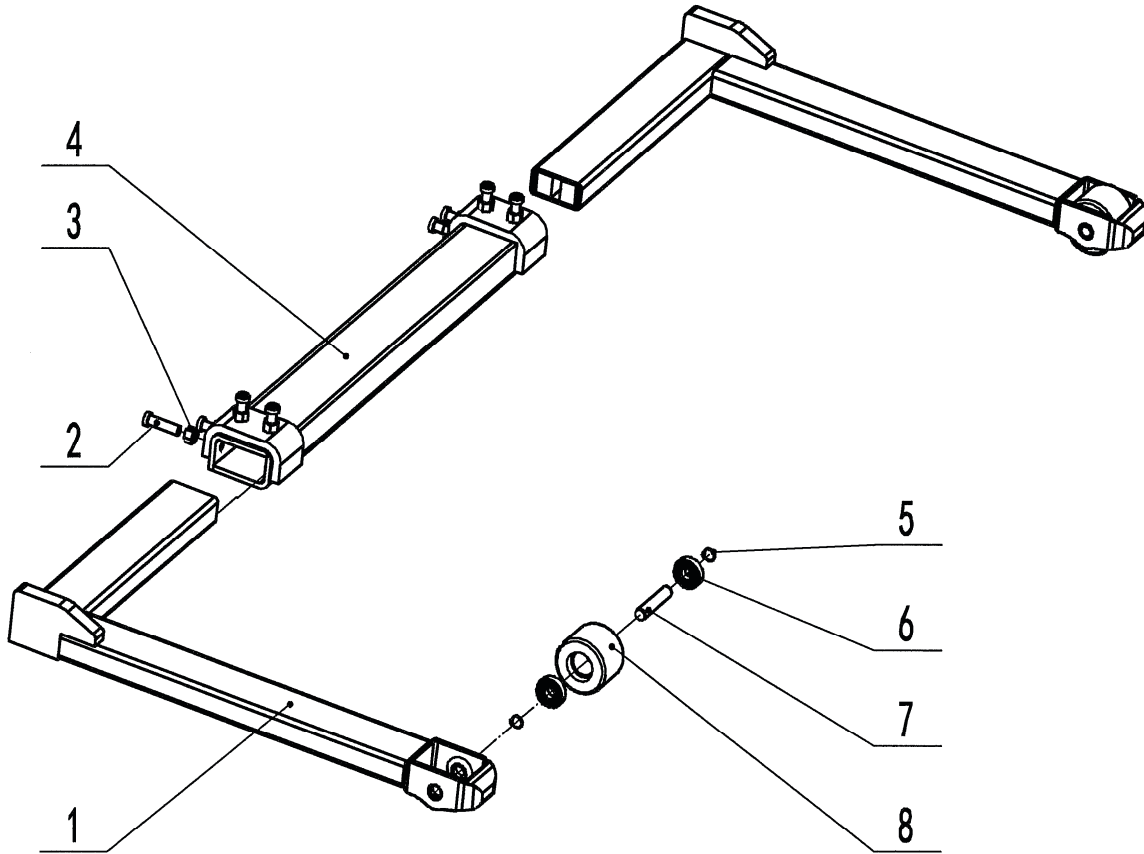
CARRIAGE ASSEMBLY



Item	Description	Qty
1	Fork	2
2	Snap Ring	2
3	Fork Shaft	1
4	Roller Wheel	4
5	Roller Wheel Shaft	4

Item	Description	Qty
6	Snap Ring	4
7	Lift Frame	1
8	Snap Ring	4
9	Carriage Roller Wheel	4

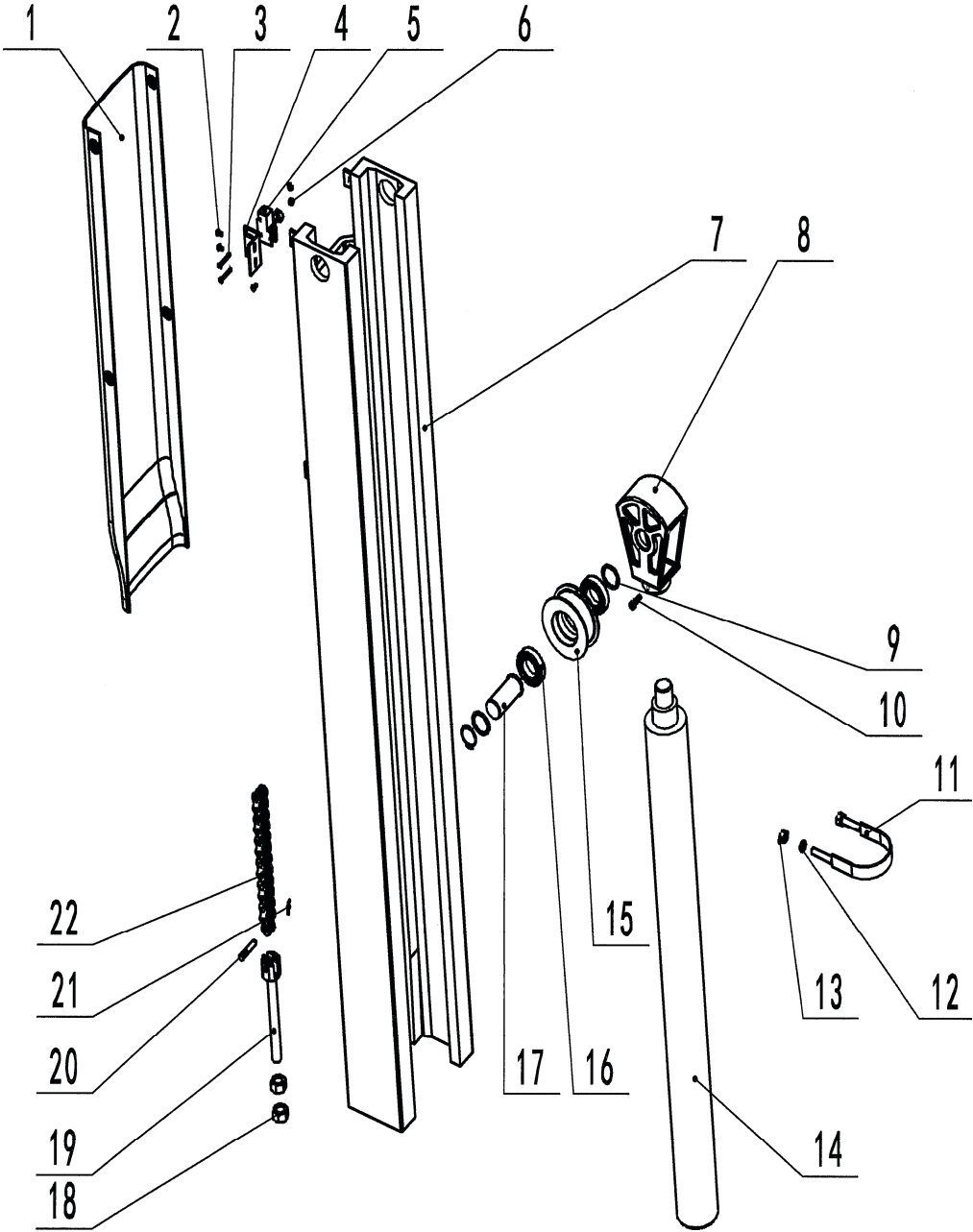
OUTRIGGER LEG ASSEMBLY



Item	Description	Qty
1	Leg	2
2	Screw	8
3	Nut	8
4	Bottom Mast Beam Weld	1
5	Snap Ring	4
6	Bearing	4
7	Front Wheel Shaft	2
8	Front Wheel	2

PalletPal Stack-N-Go

MAST ASSEMBLY

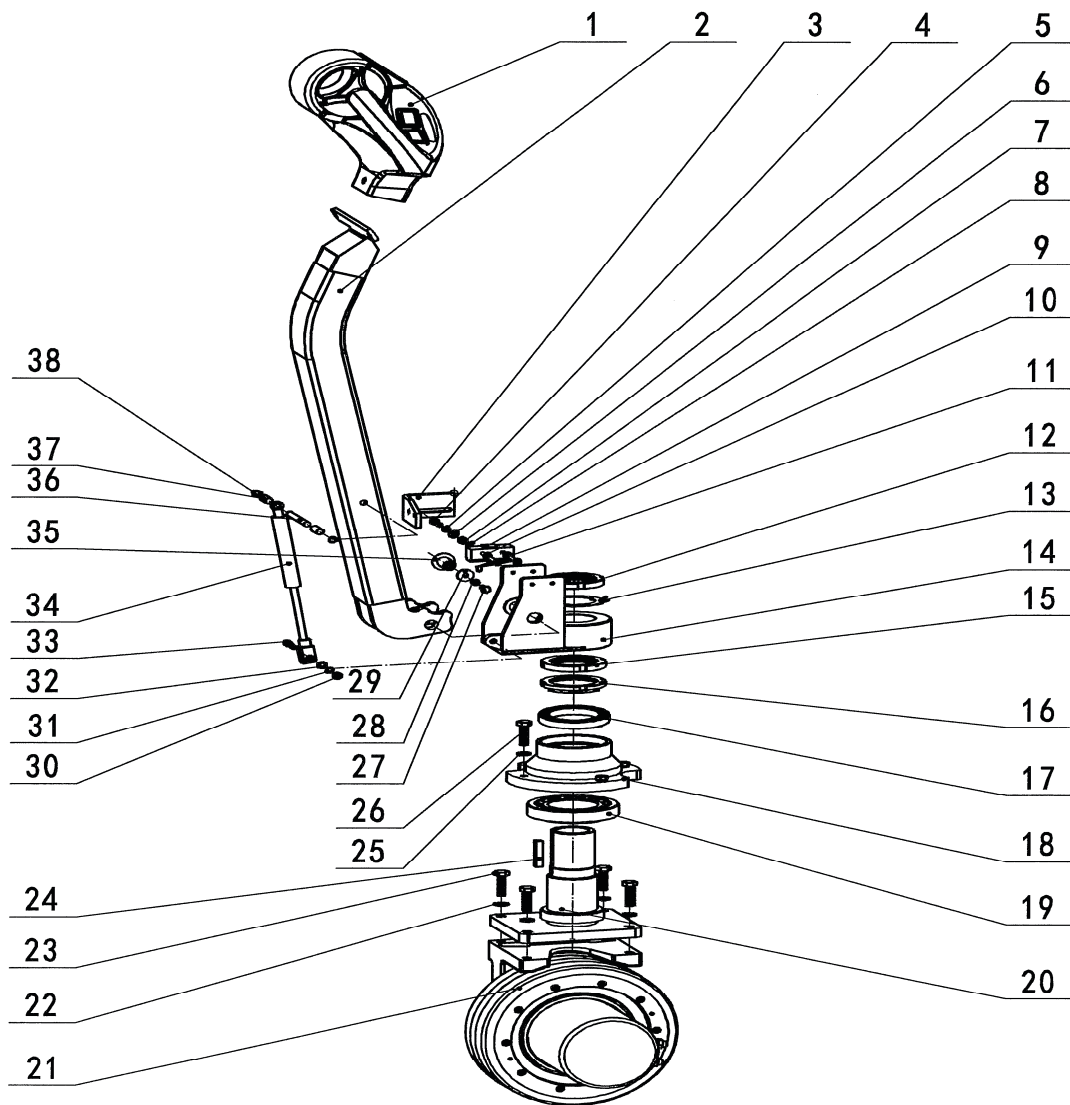


Item	Description	Qty
1	Mast Cover Plate	1
2	Screw	4
3	Screw	2
4	Travel Switch Holder	1
5	Nut	2
6	Travel Switch	1
7	Mast Weldment	1
8	Chain Wheel Footstock	1

Item	Description	Qty
9	Washer	2
10	Screw	1
11	U Bolt	1
12	Washer	2
13	Nut	2
14	Cylinder	1
15	Chain Wheel	1
16	Bearing	2

Item	Description	Qty
17	Chain Wheel Shaft	1
18	Nut	2
19	Chain Drawbar	1
20	Pin	2
21	Split Pin	2
22	Leaf Chain	1

STEERING ASSEMBLY



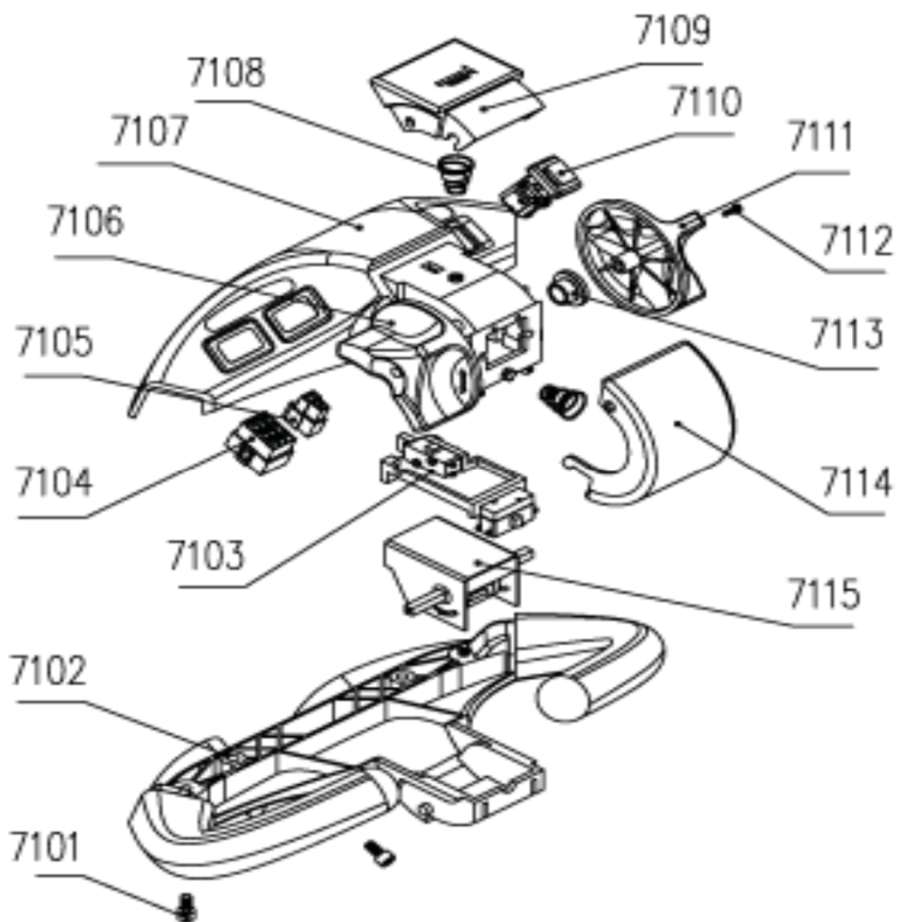
Item	Description	Qty
1	Handle	1
2	Handle Pipe Weld	1
3	Cover Lock Plate	1
4	Bolt	2
5	Washer	2
6	Washer	2
7	Nut	2
8	Nut	2
9	Travel Switch	1
10	Washer Screw	2
11	Round Nut	2
12	Washer	1
13	Bearing	1
14	Handle Base Weld	1
15	Round Nut	1

Item	Description	Qty
16	Washer	1
17	Bearing	1
18	Drive Wheel Sleeve	1
19	Bearing	1
20	Steering Weld Base	1
21	Drive Wheel	1
22	Washer	4
23	Bolt	4
24	Key	1
25	Washer	4
26	Bolt	4
27	Bolt	2
28	Washer	2
29	Washer	2
30	Nut	1

Item	Description	Qty
31	Washer	1
32	Washer	1
33	Screw	1
34	Spring	1
35	Screw	2
36	Pin	1
37	Locating Sleeve	2
38	Snap Ring	2

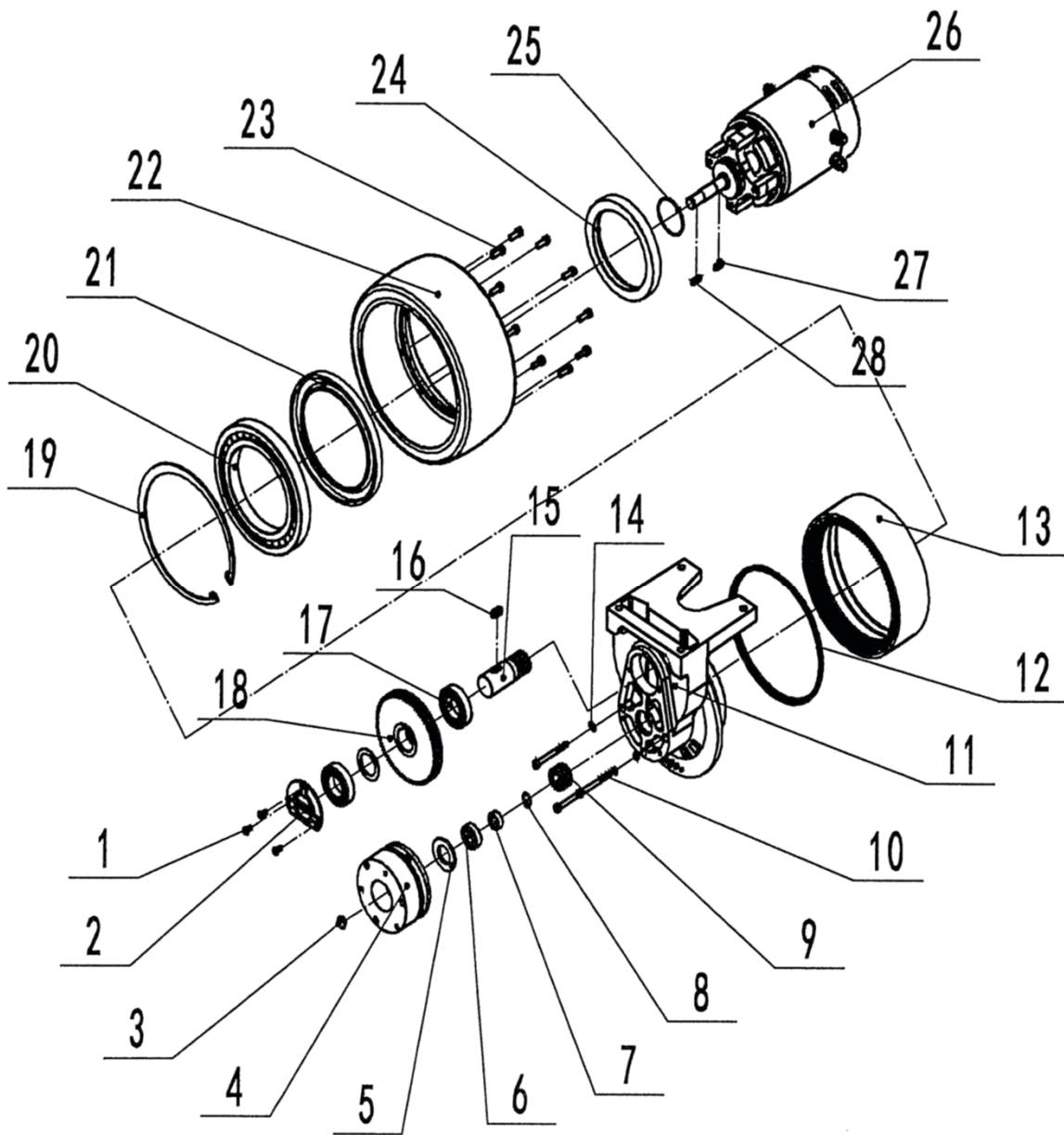
PalletPal Stack-N-Go

CONTROL POD



Item	Description	Qty
7101	Scew M6x12	3
7102	Handle Bottom Cover	1
7103	Front Button	1
7104	Electrical Outlet (Big)	1
7105	Electrical Outlet (Small)	1
7106	Left Handle Cover	1
7107	Upper Cover	1
7108	Spring	2
7109	Horn Button	1
7110	Button Group	1
7111	Right Handle Cover	1
7112	Bolt M3x10	2
7113	Washer	2
7114	Switch Cover	1
7115	Switch	1

DRIVE WHEEL ASSEMBLY



Item	Description	Qty
1	Screw	3
2	Bearing Cover	1
3	Snap Ring	1
4	Brake	1
5	Ring	1
6	Bearing	1
7	Sleeve	1
8	C Clip	1
9	Beveled Pinion	1

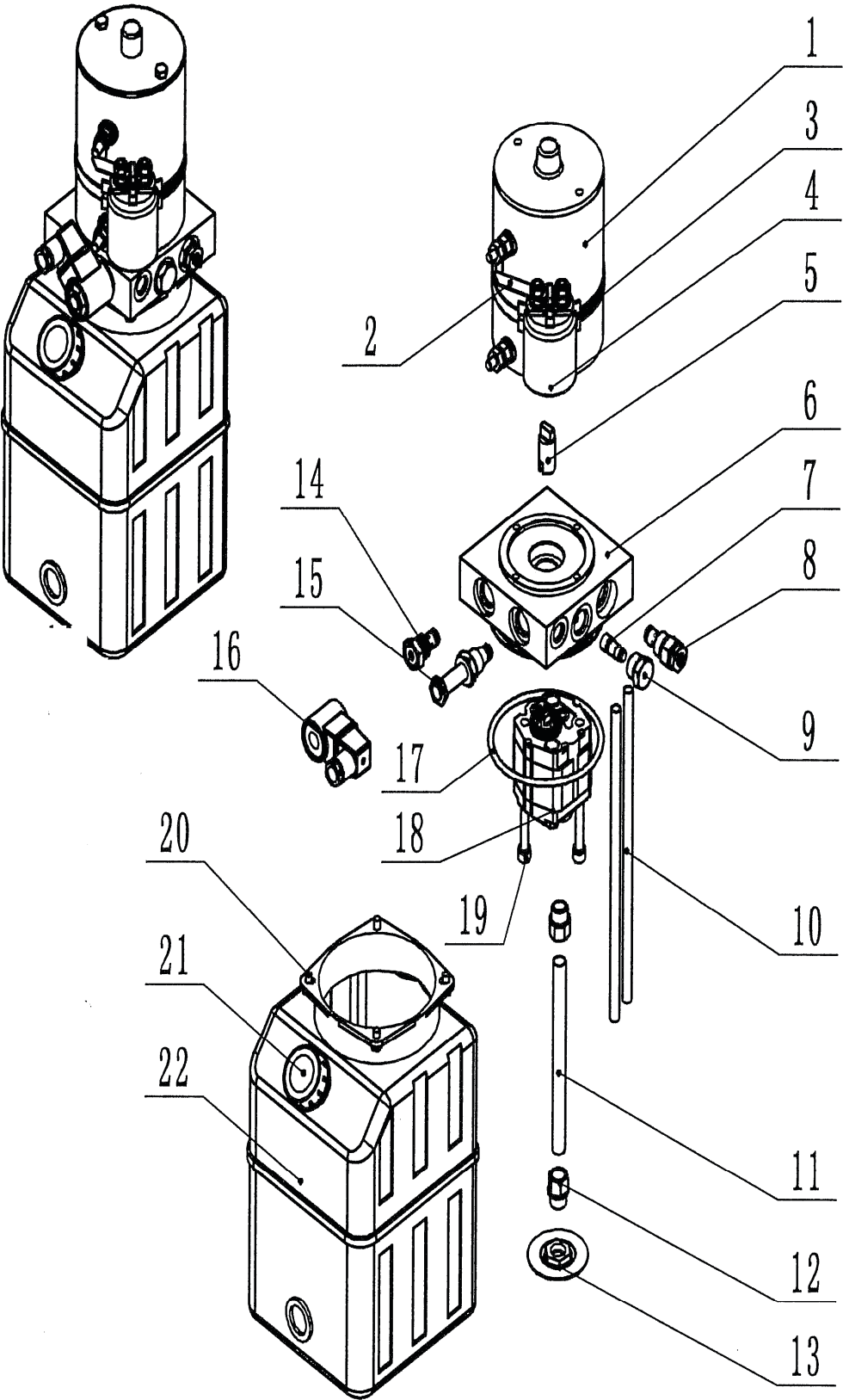
Item	Description	Qty
10	Screw	3
11	Housing	1
12	Seal Ring	1
13	Annular Gear	1
14	Spring Washer	3
15	Shaft Gear	1
16	Flat Gear	1
17	Bearing	2
18	Bevel Pinion	1

Item	Description	Qty
19	Snap Ring	1
20	Bearing	1
21	Seal	1
22	Wheel	1
23	Screw	1
24	Motor Sleeve	1
25	O-Ring	1
26	Motor	1
27	Flat Key	1

Item	Description	Qty
28	Flat Key	1

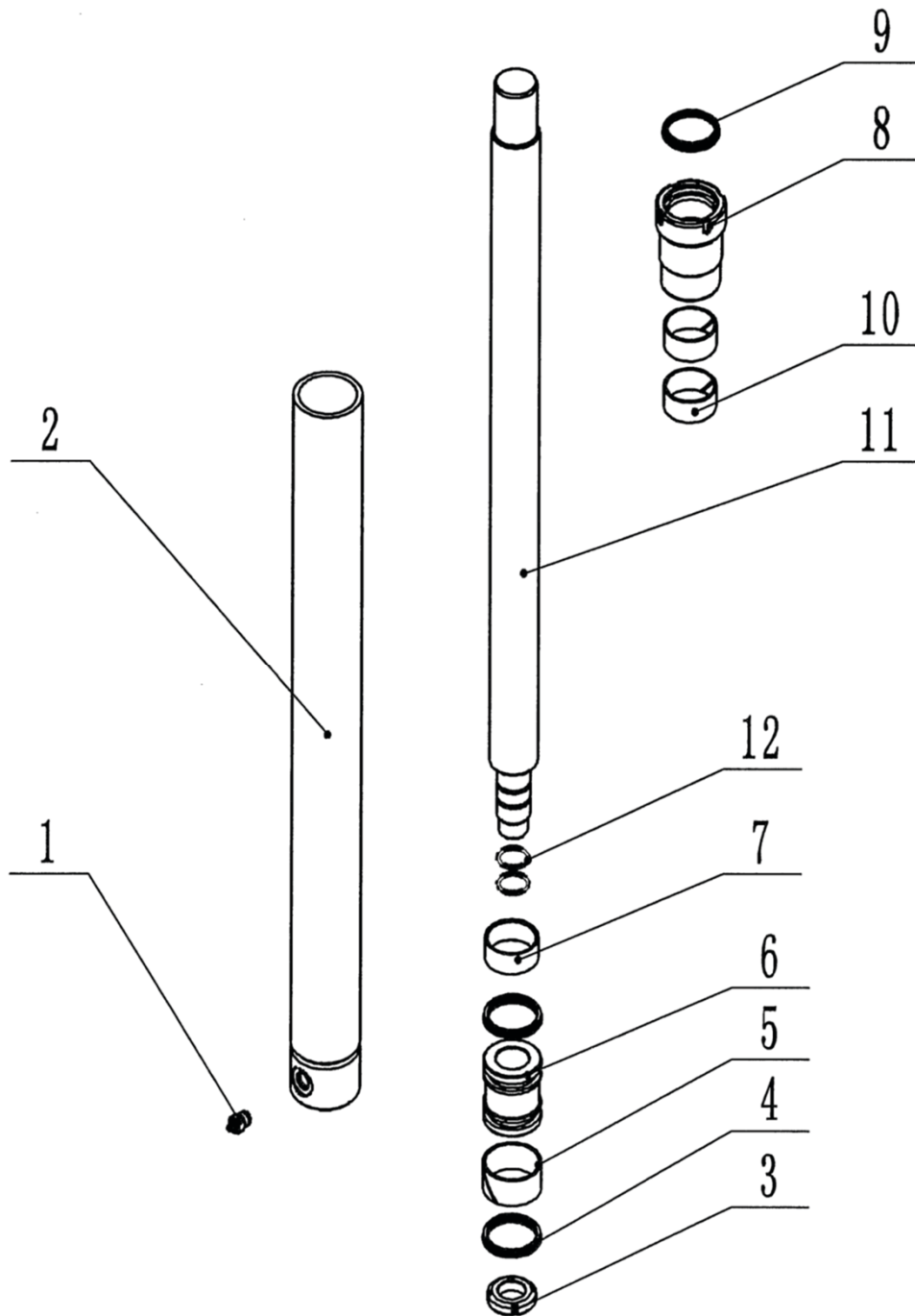
PalletPal Stack-N-Go

POWER UNIT ASSEMBLY



Item	Description	Qty
1	Motor	1
2	Power Connector	1
3	Hoop Clamp	1
4	Contactora	1
5	Connect Shaft	1
6	Center Block	1
7	Flow Control Valve	1
8	Relief Valve	1
9	Bolt	1
10	Return Pipe	2
11	Suction Pipe	1
12	Suction Pipe Adaptor	2
13	Filter	1
14	Check Valve	1
15	Solenoid Valve	1
16	Coil	1
17	O-Ring	1
18	Gear Pump	1
19	Bolt	2
20	Bolt	4
21	Tank Cap	1
22	Plastic Tank	1

CYLINDER ASSEMBLY

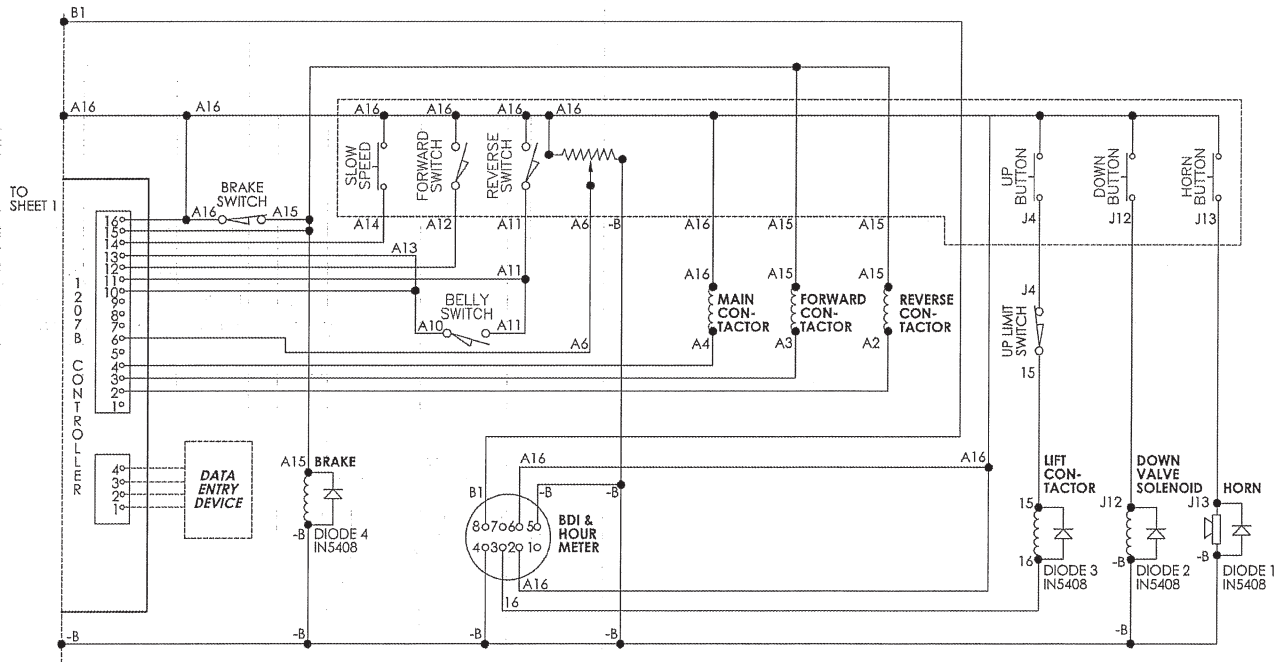
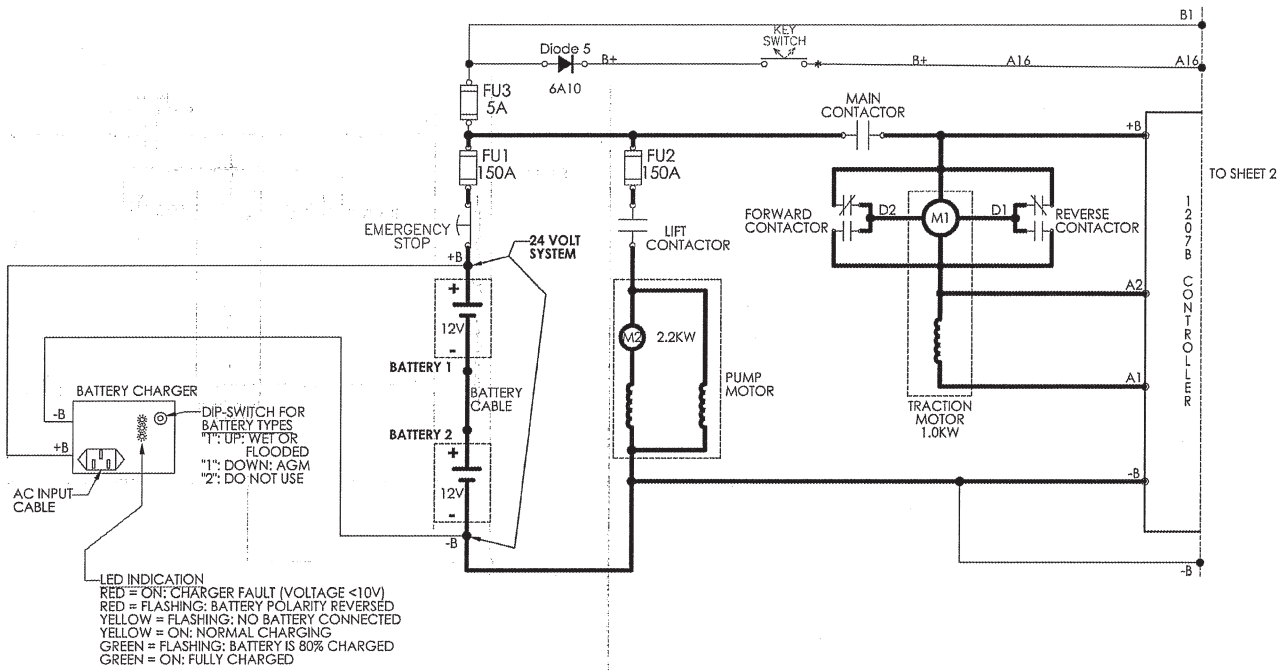


Item	Description	Qty
1	Velocity Valve	1
2	Cylinder Barrel	1
3	Nut	1
4	U-Ring	2

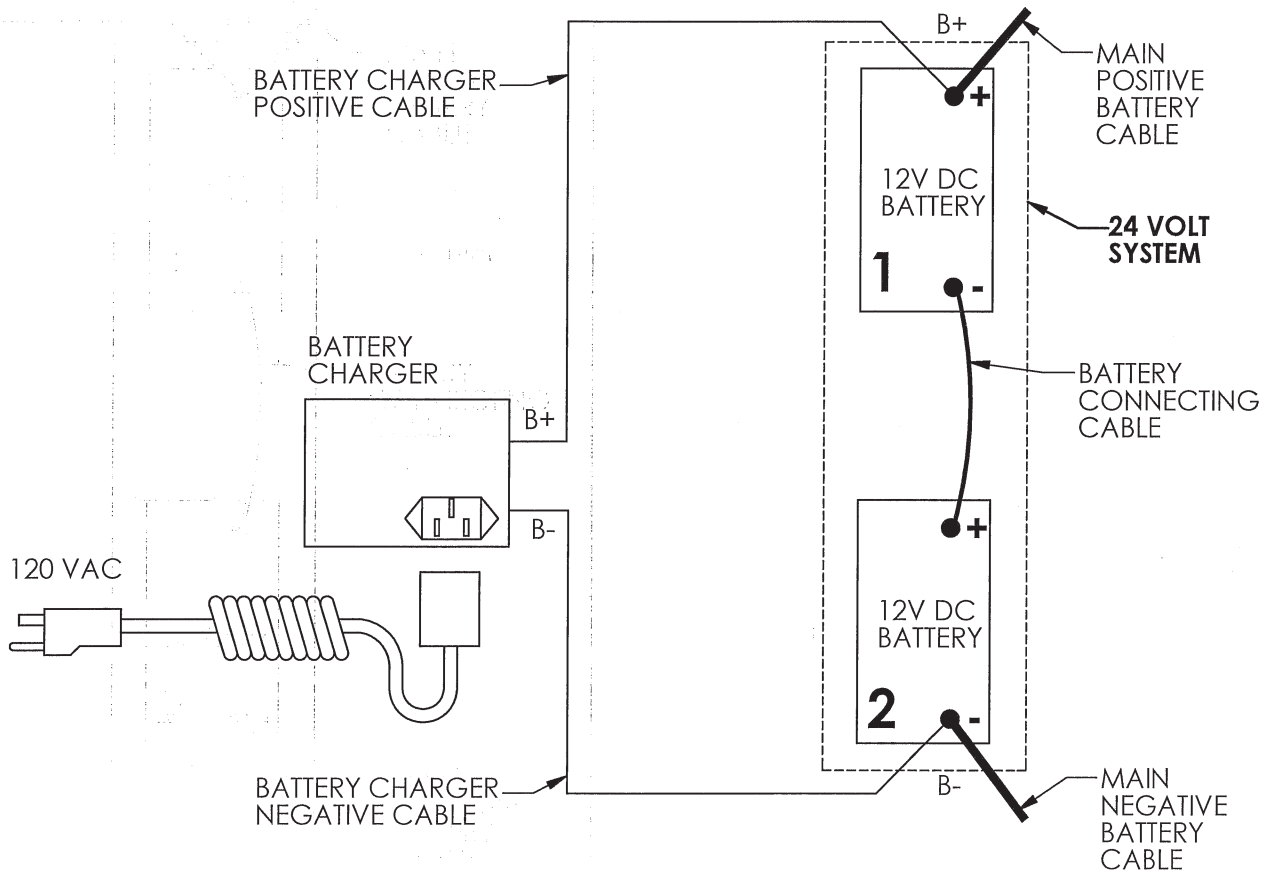
Item	Description	Qty
5	Wearable Ring	1
6	Piston	1
7	Spacer	1
8	Direction Sleeve	1

Item	Description	Qty
9	Dustproof Ring	1
10	Wearable Ring	2
11	Piston Rod	1
12	O-Ring	2

PalletPal Stack-N-Go



SOUTHWORTH



PalletPal Stack-N-Go

Figure 2: Labels & Precautionary Markings

NOTICE
 The PalletPal Stack-N-Go is a lift truck. It is designed to be used only by trained operators. It is not to be used by anyone who has not been trained and certified by a qualified person. The operator must read and understand the Operator's Manual before operating the lift truck. Failure to follow the instructions could result in death or serious injury.

WARNING
 Users must be trained and certified to operate lift trucks. Only trained and certified operators should use the lift truck. Failure to follow the instructions could result in death or serious injury.

NO RIDERS
 No riders are allowed on this lift truck. Riding on the lift truck could cause serious injury or death.

DO NOT STAND UNDER FORKS
 Do not stand under the forks or load when the lift truck is in operation. Falling forks can cause serious injury or death.

STAY CLEAR OF THE FORKS
 The forks can cause serious injury or death.

WARNING
 NO RIDERS
 DO NOT STAND UNDER FORKS
 DO NOT STAND UNDER MOVING PARTS
 STAY CLEAR OF MOVING PARTS

PLACE ON EACH SIDE OF MAST NEAR TEH TOP

PLACE UPSIDE DOWN ON INSIDE OF HANDLE

STACKER MAY VARY FROM PICTURE

NOTICE
 For the best lift capacity, refer to the Operator's Manual. The lift capacity is limited by the load distribution. The lift capacity is not to be exceeded. The lift capacity is limited by the load distribution. The lift capacity is not to be exceeded.

WARNING
 Read and fully understand operator's manual before using this machine. Failure to follow operating instructions could result in death or serious injury.

ITEM # 11

FOR USE ON:
 FPS3000-43NFO-21
 FPS3000-43NFO-27
 FPS3000-43NAS

FOR USE ON:
 FPS2500-90NAS

CAPACITY
 3000 LBS
 AT 24" LOAD CENTER

CAPACITY
 2500 LBS
 AT 24" LOAD CENTER

LEFT MANUFACTURED TO
 ASME B56.1-2004 PART 1.1.1
 TRUCK, W/OUT BATTERIES
 WITHOUT BATTERIES
 BATTERIES (WEIGHT)
 VOL. TAG # (BATT. TYPE)
 MFG. DATE

*** LOCATE SECOND LABEL ON MACHINE FRAME UNDER COVER**

ITEM NO.	QTY.	U/M	DESCRIPTION	PART NO.
11	1	EA	LD DCL 1.50X3.00 READ AND FULLY UNDERSTA	10082709
10	1	EA	LD DCL 3.00X3.50 NOTICE: THIS MACHINE I	10076204
9	1	EA	LD DCL 3.00X3.00 NOTICE BATTERY DISCHARG	10085658
8	1	EA	BK-LD DCL STACK-N-GO	10061353
7	1	EA	BK-LD DCL 3.25X2.00 CAPACITY 3000 LBS AT	10058406
6	1	EA	BK-LD DCL 3.25X2.00 CAPACITY 2500 LBS AT	10061057
5	1	EA	BK-LD 1.87X2.81 MODEL NO AND SERIAL NO I	10039199
4	1	EA	LD TAG LIFT MANUFACTURED TO ANSI/ITSDF B	10040297
3	1	EA	BK-LD DCL SOUTHWORTH	10061354
2	1	EA	BK-LD DCL 3.00X3.00 NO RIDERS	10039878
1	1	EA	BK-LD DCL 2.25X8.50 ! WARNING USERS MUST	10039876

FRACCTIONS
 ±.1/8
 ±.005
 .XX
 ±.01
 ANGLES:
 ±.5°

UNLESS OTHERWISE SPECIFIED, DIMENSIONS ARE IN INCHES

3RD ANGLE PROJECTION

STATUS:
 Released

PROJECT:
 USE OF PROPRIETARY INFORMATION LIMITED TO WRITTEN AGREEMENT

SOUTHWORTH PRODUCTS CORP.
 P.O. Box 1380 Portland Maine 04104-1380

REFERENCE: 80003413 CAGE CODE: 06328 WT: 0 LB SCALE: 1:50 MODEL: 60039586

LD LOC DIAG STACK-N-GO POWERED STACKER

TITLE: LD LOC DIAG STACK-N-GO POWERED STACKER

SIZE: B

DWG. NO.: 60039586

REV: F

SHEET 1 OF 1

DATE: 12/28/2011

DR: DATE

CK: DATE

It is the responsibility of the owner and user to ensure that all labeling is in place and legible. Any labeling which is not legible should be replaced prior to operation.

Ordering Replacement Parts

Southworth has carefully chosen the components in your lift to be the best available for the purpose. Replacement parts should be identical to the original equipment.

Southworth will not be responsible for equipment failures resulting from the use of incorrect replacement parts or from unauthorized modifications of the machine.

Southworth will gladly supply you with replacement parts for your Southworth lift. With your order, please include the model number and the serial number of the lift. You can find these numbers on the name plate, which is located on the crossbar at the base of the cylinder(s). When you are ordering parts for a cylinder, also include the cylinder number. This is stamped on the base of the cylinder housing.

To order replacement parts, please call the Parts Department.

Parts are shipped subject to the following terms:

- FOB factory
- Returns only with the approval of our parts department.
- Payment net 30 days (except parts covered by warranty).
- Freight collect (except parts covered by warranty).
- The warranty for repair parts is 30 days from date of shipment.

Parts replaced under warranty are on a “charge-credit” basis. We will invoice you when we ship the replacement part, then credit you when you return the worn or damaged part, and we verify that it is covered by our warranty. Labor is not covered under warranty on parts orders.

Parts Department
Southworth Products Corp.
Telephone 207) 878-0700 or (800) 743-1000
FAX : (207) 797-4734
repairparts@SouthworthProducts.com
www.SouthworthProducts.com

Southworth Products Stack-n-Go Warranty

Southworth Products warrants the Stack-n-Go against defects on the mast, fork carriage, chains, pumps, DC motors, controllers, cylinders and wiring harnesses from faulty material and workmanship for a period of one year from the date of invoice.

All wear items such as batteries, wheels, motor brushes, seals, bearings, hydraulic hoses, all switches, battery chargers and forks have a limited warranty against defects in faulty material and workmanship for a 90 day period from the date of invoice and 90 day limited warranty on labor. Please note that prior authorization from Southworth Products is required on all warranty work.

There are no implied warranties of any kind, more specifically; there are no warranties of merchantability or fitness for any particular purpose. Southworth Products' sole warranty shall be as set forth in this limited warranty. Southworth Products will elect to repair or replace a defective component without charge, if any components should become defective within the limited warranty period. The Southworth Warranty is for product sold with in North America. For products shipped outside of North America the warranty will be for replacement of defective parts only. Labor is not included. Proof of purchase is required for warranty. The charge for shipping the defective component is the responsibility of the buyer and must be accompanied with an RGA number. The shipping charge to return the component to the buyer is the responsibility of Southworth Products.

This limited warranty does not cover labor expense for removal or reinstallation of components after 90 days. This limited warranty shall not cover, among other things: damages resulting from foreign matter or water, failure to provide reasonable and necessary maintenance, and if applicable, use of product while charger is plugged into an AC outlet, or failure to follow operating instructions. The limited warranty is not valid for damage resulting from negligence, accident, unreasonable use, abuse or misuse, exceeding data plate capacities or altering the product without Southworth Products authorization.

Southworth Products expressly disclaims and excludes any liability for consequential, incidental, indirect or punitive damages or financial loss to people or property resulting from any breach of warranty or the operation or failure of this product.

Southworth Products makes no representation that this product complies with local, state, or federal safety/product standards codes. Should this product fail to comply in any way with those codes, it shall not be considered a defect of materials or workmanship. Southworth Products shall not be held liable for any damages resulting from noncompliance. It is the dealer's responsibility to exercise this limited warranty. This limited warranty is provided to the original purchaser (defined as the original end user) and is nontransferable. This constitutes the complete and final agreement involving Southworth Products and limited warranty obligations for products.